

Route 146

CORRIDOR MANAGEMENT PLAN



Corridor Working Group Meeting #7

Branford Fire Headquarters | 45 North Main Street, Branford, CT 06405

January 25, 2024 | 2:30pm

Route 146 Corridor Management Plan (CMP) Corridor Working Group Meeting Agenda

- Welcome
- November Public Meeting Recap and Feedback
- Draft CMP Strategies Public Survey Responses
- Review Strategy Timeframes: Short-Term and Long-Term
- Next Steps for Plan and Public Engagement



November Public Meeting – Recap

- Second Public Information Meeting:
 - Tuesday November 14, Guilford Community Center, 6:00-8:15 pm
 - Approximately 100 people attended
 - Including: David Elder & Josh Lecar - CTDOT, Daniel Amstutz – VHB, several CWG members
 - Presentation of proposed CMP Strategies
 - Overall positive response to CMP progress and strategies



November Public Meeting – Comment Summary

- About 28 comments during the meeting
- Almost half about bicycle/pedestrian concerns
 - Need for sidewalks in certain areas (in Branford near Route 1, by Linden Ave and Indian Neck Road)
 - Protection and separation of bicyclists/pedestrians
 - Addressing bad sightlines and pinch points
- Speeding concerns
 - Slowing down traffic to protect bicyclists/pedestrians
 - Use of speed cameras
 - Speed impacting intersection safety
 - Narrowing travel lanes



November Public Meeting – Comment Summary

- Flooding
 - Addressing and designing for increased flooding
 - Flooding on property adjacent to Route 146
 - Need to increase size of drainage pipes
- Historic Context & Impact
 - Protecting historic roadway while improving safety & resilience
 - Processes to review potential impacts
- Other
 - Prioritization of CMP recommendations & speed of implementation
 - Reduce truck traffic
- CWG Member takeaways?



Draft CMP Strategies: Public Survey & Responses

- Public Survey on Draft CMP Strategies released in mid-December
- High-level overview of draft strategies with links to read about strategies in more depth
- Opportunities to provide targeted feedback on each strategy area and suggest additional strategies
- 41 unique responses to survey*

**As of 01-22-24*

Route 146 Corridor Management Plan - Draft Strategies Survey

The final Route 146 Corridor Management Plan will include a list of strategies that should be pursued to preserve and protect the intrinsic and unique qualities of the Route 146 Corridor for years to come. As strategies, they define approaches to various issues that have been identified in the corridor over the course of the planning process.

CTDOT has gathered feedback from the Corridor Working Group, stakeholder interviews, public meetings, and other public outreach to refine the strategies presented in this feedback form. CTDOT is seeking input on these strategies and if there are other strategies that should be considered.

The draft strategies to follow this introduction will reference the appropriate goals that apply to it and how they are supported. The strategies are split into seven overarching areas.

More detail on the draft strategies and the project goals can be found on the Project website at <https://route146cmp.com/documents.html>, as well as the potential strategies handout at https://route146cmp.com/pdf/Route%20146%20CMP_Strategies_Public%20Review%20Handout%2011-14-23_v2.pdf.

The following strategies are proposed. Please review and provide comments as follows:

A. Flooding and Sea Level Rise Management

A.1 Review flooding area locations for site-specific context to determine most appropriate flood mitigation improvements.

A.2 Review evacuation route strategy to find ways to get around flooding, such as developing more north/south access to Route 1 or designating other existing roads to be evacuation routes.

A.3 Identify issues at water bridges and culverts to understand local flooding and review need for raised bridges, larger culverts, etc.

A.4.1 Evaluate the current state of railroad underpasses - how old the bridges are, are they in a state of good repair, when may they be replaced - to determine timeline for potential changes/improvements.

A.4.2 Work with Amtrak on long-term solution to low clearance/narrow railroad bridges and flood problems.

Draft CMP Strategies: Public Survey & Responses

- Overview of Comments (Refer also to handout of comments by Strategy)
- A. Flooding
 - Concern about getting flood water to be diverted from private properties and to improve drainage systems
 - Strategy suggestions to develop flood warning systems, drainage maintenance, infrastructure improvements
 - Raise road in certain areas
 - Locations of worst flooding
 - Specific recommendations from the Pine Orchard Association related to Totoket Road, Blackstone Ave, other roads



Draft CMP Strategies: Public Survey & Responses

- B. Bicycle & Pedestrian Access & Safety (this theme received the most comments)
 - Requests for sidewalk in many different locations
 - Various intersection safety concerns for people biking and walking
 - Support for bike lanes, wider shoulders, or separated path for biking and walking along Route 146
 - Suggest reducing speeds of cars
 - Concern for bike/pedestrian safety vs. protecting historic and scenic qualities of the road
 - Remove debris from shoulders, keep them clear



Draft CMP Strategies: Public Survey & Responses

- C. Speed Management
 - Support but also some concern for speed humps and raised crosswalks
 - More enforcement of speed limits by local police
 - Need to address speeding in areas with wide shoulders – concern about adding shoulders leading to greater speeds
 - Some support of automated speed enforcement
 - Additional traffic controls



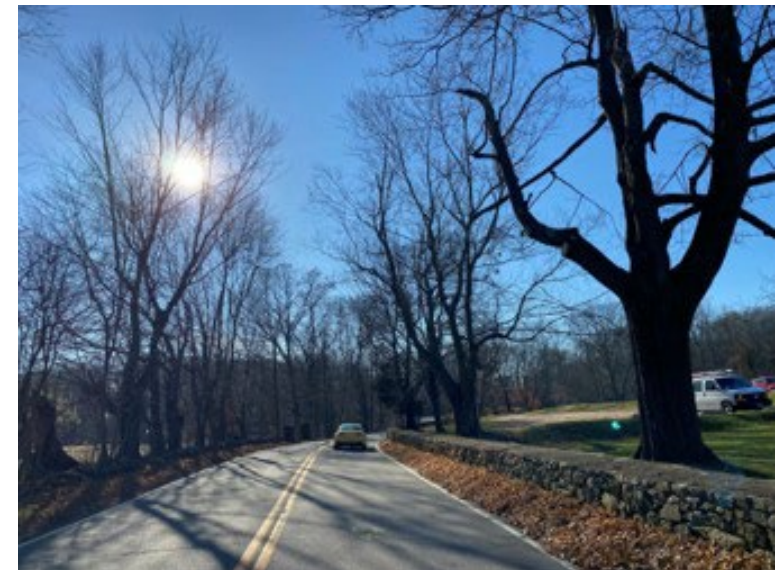
Draft CMP Strategies: Public Survey & Responses

- D. Roadside Safety
 - Agreement that cable or box beam are preferable to W-beam for aesthetics
 - Protect bicyclists/pedestrians with guiderail or make shoulder wider next to guiderail (to give them space)
- E. Intersection Safety
 - Specific intersections with safety concerns
 - Intersection lighting
 - Better sight lines at intersections
 - Better crossings for pedestrians at intersections
 - Reduce speeds especially on blind curves



Draft CMP Strategies: Public Survey & Responses

- F. Maintenance Enhancements
 - Support for mitigating invasive plants (phragmites)
 - Support for maintaining unique environmental elements, mature trees
 - Infrastructure improvements to ease maintenance
- G. Environmental & Historic Preservation
 - Support for protecting the road and to be clear about the scenic road designation in the final CMP
 - Green infrastructure, replant non-native vegetation with natives
 - Address bicycling/pedestrian safety and flooding to preserve it for future use and enjoyment



Draft CMP Strategies: Public Survey & Responses

- Other Suggested Strategies
 - Improve wetlands
 - Bury utility lines along north-south evacuation routes
 - Minimize impervious surfaces via zoning, development regulations
 - Community communications plan for bicycle/pedestrian safety and education
 - Collaborate with stakeholders, including neighborhood associations, more closely

- Thoughts/reactions to survey comments?



Draft Strategy Timeframes

- Future Strategies task includes development of strategies for short-term and long-term
- Includes graphical plan to suggest where potential strategies may fit along the corridor
- Short-term: potential to implement within 5 years or less
- Long-term: potential implementation 5 years to 20 years out
- Refer to handout



Next Steps: CMP Document

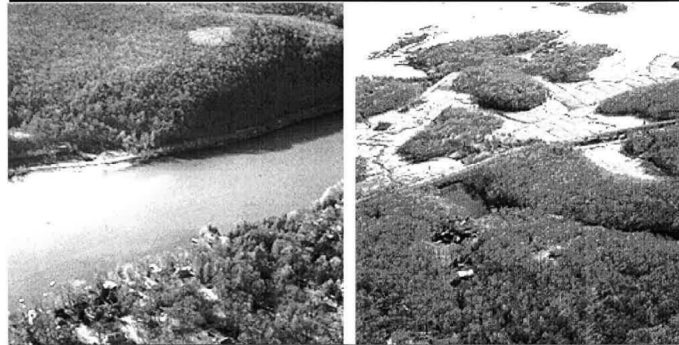
CMP Document:

- Visually appealing, accessible to the public
- Use other Corridor Management Plan documents as guides, others as needed
- Draft of document by early spring



From the Mountains to the Sea

ROUTES 77 AND 146 CORRIDOR MANAGEMENT PLAN



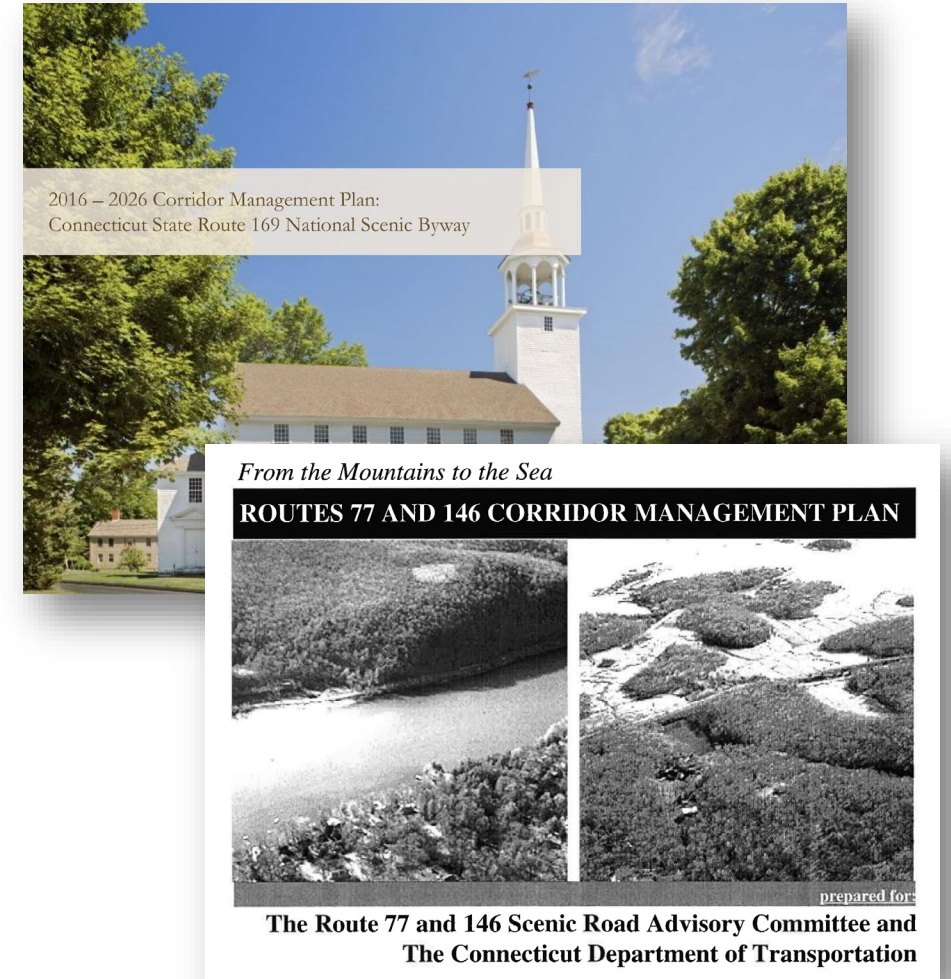
prepared for:

**The Route 77 and 146 Scenic Road Advisory Committee and
The Connecticut Department of Transportation**

Next Steps: CMP Document – Table of Contents

Proposed Table of Contents:

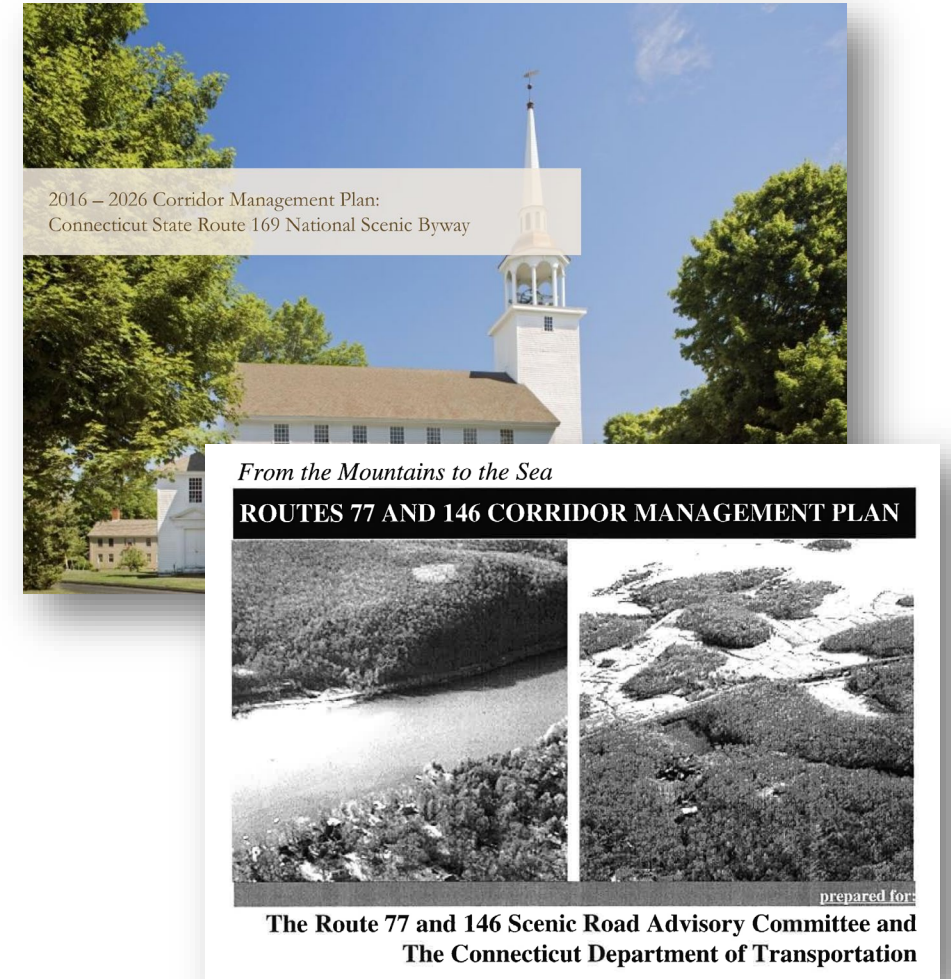
- Statement of Purpose and Need
- Executive Summary
- Introduction
 - Overview of Intrinsic Qualities
 - Scenic Road Designation
 - Recent History
- Existing Conditions Update
- Assessment of Intrinsic Qualities
 - Review of intrinsic qualities, review different road segments and land uses, viewsheds, historic properties
- Coastal Flooding and Resiliency Assessment



Next Steps: CMP Document – Table of Contents (cont'd)

Proposed Table of Contents:

- Strategic Framework
 - Strategy Themes & details
 - 20-year plan – Short-Term and Long-Term Strategies
- Community Outreach Summary
 - Corridor Working Group
 - Public Meetings
 - Stakeholder Meetings
 - Public Survey
 - Plan Website
- Appendices – Technical Information



Next Steps: Public Outreach

Public Outreach:

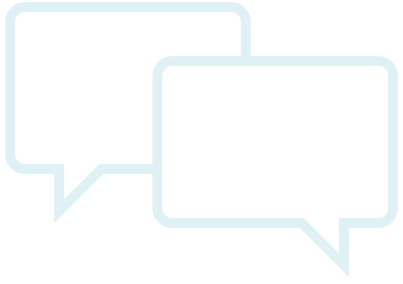
- Keep public survey open for a few more weeks
- Next public meeting in May or early June to present draft CMP and review of final strategies
- Presentation to Boards of Selectmen for Branford and Guilford



Route 146 Corridor Management Plan – Next Steps


- **Public Survey:** Ongoing through February 2024
- **Development of CMP Document:** Ongoing through April/May 2024
- **Next Public Information Meeting:** May/June 2024
- **Next CWG Meeting:** TBD





Discussion/Action Items

 damstutz@vhb.com

 860-807-4417